



Cardiff
Metropolitan
University

Prifysgol
Metropolitan
Caerdydd

PEOPLE SERVICES

**CANDIDATE
PACK**



INTRODUCTION FROM THE PRESIDENT AND VICE-CHANCELLOR **PROFESSOR CARA AITCHISON**

MA(Hons), PgDRLP, Cert Ed, MA, PhD, FAcSS, FRGS, FHEA, FLSW

I am delighted that you are considering joining our Cardiff Metropolitan team at this important time in our University's development.

In spite of the challenges that all universities face as a consequence of the current Covid-19 pandemic, Cardiff Met continues to be a thriving and financially sustainable university that enhances the wellbeing of our students, staff, City, and nation as well as making an impact on the global stage.

The University remains in a strong financial position, with turnover increasing from under £80m in 2011/2012 to £108m in 2018/19. A strategy focused on improvement, diversification and growth has seen overall student recruitment for 2019/20 surpass target and increase year-on-year over the last three years. Student engagement and satisfaction has also risen year-on-year over the last three years as evidenced by the result of 85% overall satisfaction in the 2019 National Student Survey placing us in the top 20% of UK universities for student satisfaction.

In everything we do, we strive to give our students the Cardiff Met EDGE: an ethical, digital, global and entrepreneurial outlook that is embedded within their taught modules and enhanced through their practice-focused and professionally aligned programmes. The University was the first in Wales to secure the Social Enterprise Mark, is in the top 10% of UK universities for graduate start-ups and 96% of our graduates find employment within the first six months, making us a university of choice for many people wanting to make their mark.

These are not normal times and over the last few months we have put in place a wide range of new systems, processes, policies and working practices to respond to the national emergency resulting from Covid-19. Our work to date has prioritised the health and wellbeing of our staff and students alongside the financial sustainability of our organisation in a series of values-driven decisions.

We know the current situation won't last forever and we're already making plans for how we will safely return to campus. We're even exploring how our current experiences can act as a springboard for a new way of working at Cardiff Met that enables our staff and our students to thrive even more.

Thank you again for considering Cardiff Met and how you might contribute to our community and I wish you all the best with your application.



Above: Cardiff Met PhD student Owen Griffiths, working on the NHS phones.



Above: Cardiff Met Podiatry returning to work - we gave PPE to Cwm Taf and they returned the favour by helping us source some.

● Our response to the Covid-19 pandemic

Here at Cardiff Met we have stayed true to our values during the global coronavirus pandemic, applying our ethical approach to every decision and commitment we make to our students, staff and wider community.

● Supporting our students

Cardiff Met was one of the first universities in the UK (and the first university in Wales) to release all non-returning students from the third term of their university-run accommodation. This meant that students who could not return to campus from April 2020 would not pay any accommodation fees for the final term of study.

For students who continued to live on campus (approximately 60 students including international students who were unable to return home due to travel restrictions and care leavers who consider Cardiff Met to be their home), we continued to provide catering services and donated supplies to residents on a weekly basis. Donations included bread, pasta, canned goods, protein bars and confectionary.

The University Academic Board launched a no-detriment commitment to all students, providing a safeguard that no student would be penalised unnecessarily during the pandemic. This included a standard two-week extension for all assignments and converting all final term exams into online assessments.

We became the first university in the UK to move all student advice and support services online, meaning everything from careers advice to dyslexia screening is now available to all students at a distance via digital services.

● Supporting our staff

Prior to lockdown, Cardiff Met was the first university in Wales to commit to paying all staff on salary, casual or non-permanent contracts a full wage, regardless of ability to work due to Covid-19. This extended to committing to pay all sub-contractors and subcontracted staff (most notably cleaning staff) their expected salaries.

Near 200 staff have been identified as eligible for furlough leave, and the University has committed to topping up the 80% Government incentive to ensure all affected staff receive 100% of their expected salary from the University.

We took the decision in the early weeks of the pandemic to safeguard the health and wellbeing of staff and students. This meant moving all teaching online, two weeks prior to lockdown and asking staff to work from home. To aid this change, we enhanced the confidential counselling service offered to staff, provided guidance on flexible working, and created a dedicated mini site on the staff intranet with wellbeing advice, personal development opportunities and peer-led hints and tips.

In addition, our intranet placed staff front and centre, showcasing a host of efforts to raise money for charity, how to cope with anxiety and mental health problems as a result of working at home in a pandemic and highlighting examples of remote working and teaching success.

● Supporting our communities

The Biomedical Science department based at the Cardiff School of Sport and Health Science donated all Personal Protective Equipment (PPE) to the Cwm Taf Morgannwg University Health Board, for use on the frontline at the Royal Glamorgan Hospital.

Cardiff Met became the trial centre for a new blood donation model in partnership with the Welsh Blood Service. The success of this new model for blood donation was later rolled out across Wales and has returned to the Llandaff campus several times.

Vacant student residences were offered to frontline staff, including South Wales Police Officers who were unable to return home due to shielding and isolation restrictions. Beds and services have also been made available for staff, students and members of our community who needed shelter due to facing the threat of domestic abuse exacerbated by lockdown.

Teacher training students (PGCE) launched an online curriculum for KS3 learners at the beginning of lockdown, aided by lecturers at the University. One of the first student-lead initiatives to launch during the crisis, some 30 students are currently participating in the delivery of weekly classes covering English, Welsh, Maths and Science.

Academics and engineers from our PDR and the Cardiff School of Art and Design began manufacturing visors and other surgical consumables for clinical trials, sparing frontline stock from being used in the laboratories.

Cardiff School of Education and Social Policy technical demonstrators have been producing face shields for care home workers in the Rhondda Cynon Taf area, manufacturing some 400 to date.

In partnership with Nextbike and Cardiff University, Cardiff Met has funded 500 memberships to the group cycling scheme to aid frontline workers in getting to and from work, free of charge.

The Food Industry Centre based on the Llandaff campus has supported the food and drink industry with a range of projects, including a dedicated advice line for business and helping distillers to convert processes from alcohol production to making hand sanitizers.



Above: Blood Bank at Cardiff Met, we set up the first of its kind in Wales.

● Contributing to the national effort

From the outset of the pandemic, the Cardiff School of Sport and Health Sciences committed two Thermo Fisher 7500 ABI Fast Platform machines to aid the national testing efforts for Covid-19 at the first national centre in Milton Keynes.

Seconded staff and PhD students with field experience went back to work on the frontline, with a guarantee of no detriment to their study or work being made by the University.

Cardiff School of Technologies is piloting the use of AI and robotics in GP surgeries to aid the doctors and patients in identifying symptoms and raising awareness of Covid-19. A second project at the school is investigating how the weather impacts on the trajectory of the virus, using AI to map the global impact of the pandemic.

Psychology academics in the School of Sport and Health Science have teamed up with Cardiff University to explore public attitudes to the pandemic, with a particular focus on the government messaging and advice being delivered.

Academics have provided the wider public with advice on the risks of cyber-attacks and how to protect yourself, how mindfulness can enhance creativity and a feeling for self-worth.



From top left to right: Cardiff Met Graduation Ceremony at Wales Millennium Centre; Cardiff Met Plas Gwyn Halls of Residence, where we housed some 60 students and kept them fed; Plas Gwyn, staff social distancing; Delivering water supplies donated to staff at Cardiff and Vale University Health Board.

● Ensuring a stable future

The strategic plan developed in 2016-2017 focused on improvement, diversification and growth to further strengthen the sustainability of the University and decisions that were taken over the last few years have meant that Cardiff Met was in a strong financial position before the pandemic hit. This strong financial position allowed us to make a number of key decisions around staff and student wellbeing at the start of the lockdown period.

There is no doubt that the financial situation facing UK universities will be challenging, however, as is confirmed in a recent report by the Welsh Governance Centre, with our strong finances resulting from diverse income streams, solid reserves and cash flow, Cardiff Met is best placed in Wales to weather the Covid-19 storm.

● Creating the new workplace

A survey commissioned to learn more about staff experiences of working remotely, and to find out what the University might take from the experience of the pandemic, has been launched. Called '#WhatNext?', we are exploring how changes to our ways of working might support a more flexible set of working principles in the future.

Professor Cara Aitchison

MA(Hons), PgDRLP, Cert Ed, MA, PhD, FAcSS, FRGS, FHEA, FLSW

ABOUT THE UNIVERSITY

Cardiff Metropolitan is a thriving global university founded in 1865 with a rich and established history, based in a vibrant European capital city. With an academic portfolio oriented towards practice-focused and professionally recognised education and research, the University offers over 250 taught programmes with a strong focus on employability and teaching excellence.

The University has around 20,000 students enrolled on programmes located in Cardiff and at 16 collaborative partners around the globe. Our students come from over 140 countries and we are deeply committed to enhancing the role of education in international relations and cultural diplomacy and to enabling all of our students to develop into global citizens. The University has significant strengths in delivering international student and staff mobility programmes and the undergraduate curriculum and wider student experience embrace an extensive range of sector-leading global mobility opportunities and employability initiatives.


Our Strategic Plan focuses on enabling students to develop knowledge, skills and experience as **Ethical, Digital, Global** and **Entrepreneurial** graduates. This approach has been rolled out in the form of the Cardiff Met **EDGE**; a new curriculum approach designed to place these life-long skills at the heart of the Cardiff Met experience and around which the subject-specific knowledge of each degree programme is developed. Our teaching is underpinned by our research and innovation and in the most recent Research Excellence Framework exercise (REF 2014) the University was ranked as the highest modern university for research quality.

The University's purpose is to deliver high quality and high impact practice-focused and professionally recognised education, research and innovation in partnership with our students and industry. In working together, and by championing creativity and diversity, we seek to enable every student to fulfil their full potential to make outstanding graduate-level contributions and generate sustainable economic growth and social cohesion for our city, Wales and the wider world.

The University is based on two campuses in the north-west and north-east of the city of Cardiff. The Llandaff Campus, located in the north-west and nestled in beautiful surroundings between Llandaff Cathedral and the River Taff, is home to Cardiff School of Art & Design, Cardiff School of Management, Cardiff School of Technologies and part of the Cardiff School of Sport & Health Sciences. In addition to a wide range of learning, teaching and student support services, the Llandaff Campus houses extensive exhibition, hospitality and events spaces. The Llandaff Campus is also home to the sector-leading Food Industry Centre Zero2Five and a range of health sciences provision including specialist laboratories, a Podiatry Centre and a Speech and Language Therapy Centre which support NHS provision by being accessible to the public. Nearby, the newly acquired Alexander House is home to the world-renowned International Centre for Design & Research.

The Cyncoed Campus in the north-east of the city has extensive international standard sports facilities including the National Indoor Athletics Arena and is home to the Cardiff School of Sport & Health Sciences and the Cardiff School of Education & Social Policy.

The University has developed an exciting Master Plan for our campuses with an ambitious vision looking forward to 2032, with the aim of creating world class campus environments with wellbeing at their heart. The first stage of this Plan, to be delivered between 2020 and 2026, will include new build development, significant refurbishing and repurposing of our existing estate, improving the public realm and opening out access to our natural environment. Work already underway will see a new home for the Cardiff School of Technologies opening on the Llandaff Campus in 2020.

 **Download our Strategic Plan Summary 2017/18 - 2022/23 here.**



Cardiff
Metropolitan
University

Prifysgol
Metropolitan
Caerdydd

STRATEGIC PLAN

2017/18 - 2022/23

OUR PRIORITIES

1. A Values Driven University

Our University will champion *Creativity, Diversity, Freedom and Innovation* through trusted partnerships that generate educational transformation, research with impact, sustainable economic growth, social cohesion, and health and wellbeing.

2. Cardiff Met 'EDGE'

Our University will improve the quality and outcomes of teaching and the wider student experience through delivery of the 'Cardiff Met EDGE', enabling all students to develop *Ethical, Digital, Global and Entrepreneurial* skills, experience, knowledge, confidence and resilience.

3. Cardiff School of Technologies: 4D: Data | Digidol | Dylunio | Dyfodol

Our University will establish a School focused on Data, Digital and Design Futures developed in partnership with technology companies. It is intended to locate the School in a new purpose-built City Centre Campus accommodating 2,000 students by 2022 and offering education, research and innovation addressing student demand and employer need in digital media and smart technology, data science and informatics and design technology and engineering.

4. Cardiff Global

Our University will implement a 'Cardiff Global' programme comprising *Cardiff Open Colleges* and *Global Academies* connecting Cardiff and our global partners. *Cardiff Open Colleges* will deliver progression routes from schools and colleges, support the expansion of Welsh medium provision and foster civic engagement in the Cardiff Capital Region. *Global Academies* will deliver interdisciplinary, international and impactful postgraduate and research provision in areas where the University is internationally-leading.

5. Managed Growth Across All Schools

Our University will increase its student population by extending its geographical reach, increasing its programme portfolio and enhancing its partnerships with employers and stakeholders. Delivery will be underpinned by: high quality academic standards and research-informed teaching; highly skilled and qualified staff with industry links; high levels of student and staff mobility and an international outlook; and technology-enhanced learning and assessment leading to high levels of graduate employment.

6. Growth in Research and Innovation

Our University will build on its position as the UK's modern university with the highest quality research (REF 2014) to develop its reputation through significant growth in the volume, quality, value and impact of research and innovation.

7. Synergy between On- and Off-Campus Provision

Our University will develop its sector-leading Trans-National Education provision and unique model of international collaboration to facilitate even higher levels of student mobility and postgraduate progression to Cardiff Met from our international partners.

OUR PURPOSE

The University's purpose is to deliver high quality and high impact practice-focused and professionally recognised education, research and innovation in partnership with our students and industry. In working together, and by championing creativity and diversity, we will enable every student to fulfil their full potential to make outstanding graduate-level contributions and generate sustainable economic growth and social cohesion for our City, Wales and the wider world.

OUR PERFORMANCE

The University's performance will be measured by the success of our staff, students and stakeholders working in partnership to improve graduate outcomes, civic engagement, international influence and economic impact.

OUR PILLARS

Delivery of the University's identified purpose and its seven priorities is supported by our three pillars of Places, People and Performance:

PLACES

Our two *Campuses* are where staff, students and stakeholders devise and deliver transformational education, research and innovation in partnership.

Our five *Schools* offer practice-focused and professionally recognised education and research to support civic, economic and international development.

Our *Cardiff Global* initiative, encompassing Cardiff Open Colleges and Global Academies, will ensure our local and global activities are mutually reinforcing.

Our *Centres for Research & Innovation* will align with our taught programmes in art and design, business and management, education and social policy, sport and health sciences, and technologies.

PEOPLE

Our *Students and Staff* are our most valued asset. By creating an environment in which individuals thrive we will thrive as a University providing high quality and high impact education, research and innovation.

The *Cardiff Met EDGE* will enable all students to develop skills, experience, confidence and resilience through a coherent package of placements, projects, internships, volunteering and international mobility.

A values-driven approach to organisational culture and practice will develop a positive, collaborative and enabling working environment.

Professional Service structures and functions and Academic Roles will be remodeled to develop a sector-leading and student-facing service culture.

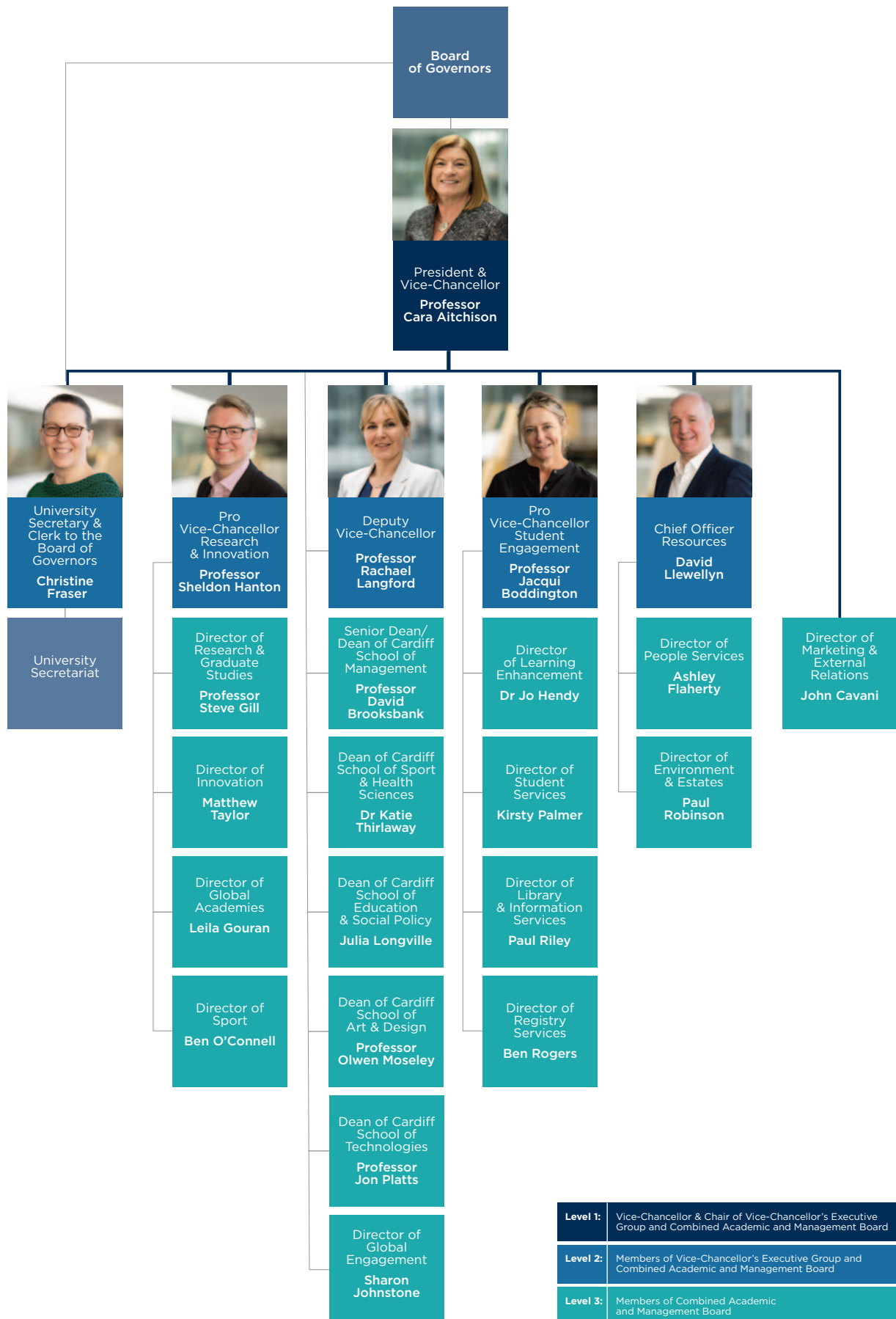
PERFORMANCE

The Strategic Plan maps a series of annual Measures of Success in the form of targets that will be delivered by everyone working together.

Our performance will be underpinned by our shared values of *Creativity, Diversity, Freedom and Innovation*.

We expect our people to strive for excellence in everything they do by sharing our common values and our behaviours of *Leadership, Trust, Courage and Accountability*.

EXECUTIVE & ORGANISATIONAL STRUCTURE



THE UNIVERSITY'S ACADEMIC SCHOOLS

The University is structured into five Academic Schools offering over 250 different academic and professional programmes.

● **Cardiff School of Art & Design**

A British Art & Design School with a 150-year history, Cardiff School of Art & Design (CSAD), based on the Llandaff Campus, is home to students united by ambition and a true passion for creative enquiry. They are makers and thinkers in the fields of architecture, design, fashion, fine art, and a range of craft disciplines. The curriculum is innovative and interdisciplinary, allowing for transformative collaboration and opportunities and merging STEM subjects with the crucial creative ingredients of Art and Design. Access to 'state of the art' facilities, and exposure to world leading research, enables students to navigate their own journeys to being practitioners, future academics, entrepreneurs, employable graduates and the employers of the future.

The School is also home to FabLab Cardiff, the Perceptual Experience Laboratory and a number of major research and innovation initiatives that cohere around visual perception and user-centred design linking disciplines from fine art to computer science.

● **Cardiff School of Education & Social Policy**

The Cardiff School of Education & Social Policy (CSESP) is located primarily on the Cyncoed Campus and offers a diverse and stimulating range of undergraduate and postgraduate programmes in education, humanities and social policy.

Working collaboratively with external partners, schools and organisations the School ensures that programmes are discipline specific, innovative and professionally relevant. Many of our students undertake relevant work placements to ensure they are ready for the world of work or further academic study and our new BA (Hons) Primary Education with Qualified Teacher Status, delivered fully in partnership with schools, confirms our position as the only provider of initial teacher education in south-east Wales.

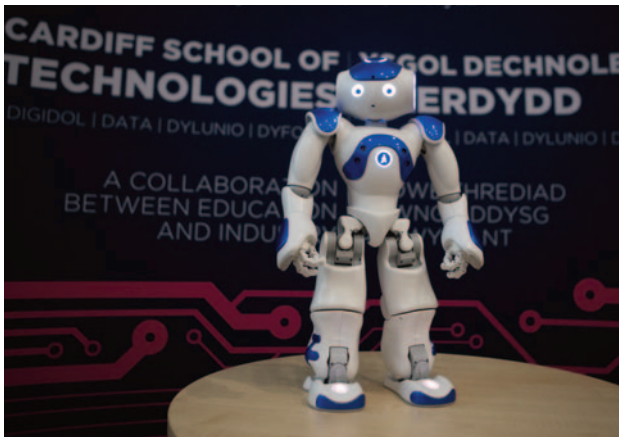
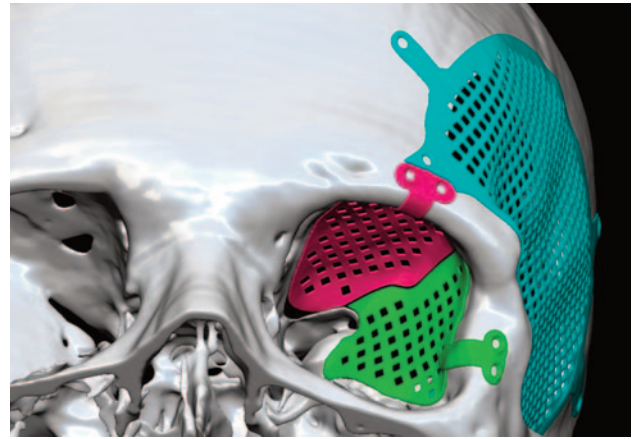
● **Cardiff School of Sport & Health Sciences**

Cardiff School of Sport & Health Sciences is a recognised centre of excellence in the UK and has established a national and international reputation for the quality of its teaching, research and innovation in the areas of sport and health sciences. Our vision is to be known globally for our employability-focused education and impactful research.

Based across both the Cyncoed and Llandaff campuses, the School has a strong portfolio of interdisciplinary programmes that provide our students with the opportunity to develop knowledge and skills, gain practical experience and utilise cutting edge equipment and facilities. Many of our programmes are professionally accredited to meet the requirements of the sport and healthcare professions, and a number are unique within Wales.

The School has a thriving research culture, with over 100 PhD students across a variety of the School's disciplines. The University's REF 2014 submission to Sport and Exercise Sciences, Leisure and Tourism was ranked equal 7th overall in the Times Higher Education listings. The School is also home to the world-leading Food Industry Centre, the Centre for Performance Analysis and the Centre for Physical Activity and Health.

The University has an established record in performance sport and this will be strengthened with further investment in facilities, coaching, strength and conditioning and performance analysis. The Cyncoed Campus also makes a major civic contribution to sport, health and wellbeing by opening its doors to over 2,500 young people every week who participate in sport programmes offered by the University and our partners.



● Cardiff School of Management

Based in a spectacular state-of-the-art building, including dedicated labs for digital and fashion marketing, a Bloomberg Trading Suite and a moot court to support our new undergraduate LLB programme in Law, the School offers a wide range of programmes carefully designed in partnership with business and industry to ensure our students are highly employable.

Cardiff School of Management also educates thousands of students at our 16 partner colleges around the world including many students who progress to Masters and higher degrees at our Cardiff-based campus.

● Cardiff School of Technologies

Cardiff School of Technologies is based on the Llandaff Campus and was launched in 2018. This new School, which focuses on computer science, smart technology, data science, informatics and engineering already has over 500 students. The School works in partnership with industry and also offers degree apprenticeship programmes with the Office for National Statistics.

Responding to student demand and employer need the School has been designed to support the growing number of digital and technology companies clustering in the Cardiff Capital Region and is key to developing the University's already strong position as a top 12 UK HEI for graduate start-ups.

● Centres of Excellence

Cardiff Metropolitan University has centres of excellence in each of its Schools and these centres all share a focus on design and performance to maximise human potential and economic growth.

PDR, the University's International Centre for Design and Research, is one of the UK's leading design centres and works with companies and organisations around the world in the development of new products, services and innovations. Its research in innovation and design is extensive and was recognised in 2015 with the Award of the Queen's Anniversary Prize for its work in the use of 3D digital scanning technologies in maxillofacial reconstructive surgery.

FabLab Cardiff and the Perceptual Experience Laboratory, along with other innovations in visual perception technology, has established a cluster of world-leading expertise that enhances the University's research and innovation in design and human performance.

OUR GLOBAL REACH & PARTNERSHIPS



Working in partnership with our students and stakeholders locally, nationally and globally is a hallmark of Cardiff Metropolitan University.

The University is committed to developing civic and global citizens of its students and currently has students from more than 140 countries studying for awards. Global mobility is a key component of Cardiff Met's ethos and students and staff can study at over 1,000 universities around the world, with funding for mobility programmes supported by the University and its partners and by Santander Scholarships and, at present, the European Commission.

Cardiff Metropolitan is one of the UK's most internationalised universities with partnerships around the globe. Many of the University's degrees offered in Cardiff are also run through its 16 partner universities and colleges. Cardiff-based students can study part of their degree at a partner university and students on Cardiff Met degrees at our partner institutions can opt to study part of their programme in Cardiff. Our current partners are in Bahrain, Bangladesh, Bulgaria, China, Cyprus, Greece, Egypt, Ethiopia, India, Lebanon, Malaysia, Morocco, Nepal, Oman, Vietnam, Singapore and Sri Lanka.

Within Wales, the University has extensive partnerships with industry, government and the third sector and has been instrumental in the development of many aspects of economic and education policy and practice, including the recent development of the Digital Competence Framework for schools in Wales.

The University has strong links with FE colleges across Wales and particularly with Cardiff and Vale College, Bridgend College, Coleg Gwent. A priority of the University's Strategic Plan is the development of a greater range of appropriate progression routes from our partner colleges into undergraduate programmes based at our Cardiff campuses.

Within the City of Cardiff, a joint venture agreement with Cardiff Council has seen Cardiff Met Sport assume responsibility for the delivery of Sport Development for the city. This initiative has strengthened the University's relationships with key stakeholders such as Sport Wales and Public Health Wales, provided opportunities for students to gain research skills and work experience and has helped to develop the University's focus on ensuring sport, health and wellbeing are at the heart of our campuses.

OUTSTANDING LEARNING & TEACHING

Cardiff Met has a well-established reputation for learning, teaching and assessment that prepares students to achieve graduate outcomes and fulfilling lives. Our approach is founded upon: high quality academic standards; working in partnership with students; active learning; work experience; volunteering; international mobility; global citizenship; and research-informed teaching.

The 'Cardiff Met EDGE' enables all students to develop Ethical, Digital, Global and Entrepreneurial skills, experience, knowledge, confidence and resilience as core strengths around which their specialist degree subject is developed and delivered (*University's Strategic Plan, 2017/18 - 2022/23*).

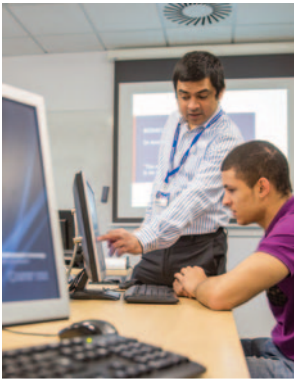
Our person-centred approach is supported by small class sizes, high levels of class contact and a strong framework of Personal Tutors and Programme Directors. Cardiff Met is committed to providing support and enabling learning opportunities, environments and facilities that promote learner progression, satisfaction and success for all. Our Student Engagement Strategy 2018-2023, produced in partnership with the Students' Union and students, aims to ensure that all learners have fair and equitable access to opportunities that promote and encourage academic engagement and success. The outcome is that our students are equipped to thrive not just at university but in employment and life beyond their studies, whether in Wales or the wider world.

Our focus on employability has ensured that 96% of our graduates secure employment or enter further study within six months of graduating, while our entrepreneurship team helps students and graduates realise their business ambitions (DHLE 2017). For the last three years the University has featured in the top 12 of over 160 UK higher education institutions for the number of graduate start-ups per student and the University has the highest rate of graduate start-ups in Wales.

Cardiff Metropolitan University was awarded Silver status in the 2017 Teaching Excellence Framework (TEF); one of only four universities in Wales to achieve this rating. In the most recent National Student Survey (2019) 85% of students at Cardiff Met agreed or strongly agreed that overall, they were satisfied with the quality of their course.

The University has a long-established record of delivering high quality teacher training programmes and is the only provider of Initial Teacher Training in South-East and Mid-Wales. We take great pride in our teaching and have the highest number of National Teaching Fellows of any university in Wales; over 86% of staff on academic contracts are classified as 'qualified to teach' including fellowship recognition, 79% of staff are members of Advance HE and 49 staff are recognised as either Principal or Senior Fellows, with 11 of those recognised at panels held in 2018/19. In recent years a number of accolades have been received by the University for our teaching, our students' experience and our students' success and our plan is to build on this solid platform to deliver even more far-reaching success in partnership with our students.

The 2019/20 academic year has welcomed the first intakes on almost 20 new degree programmes including BSc Data Science, a suite of six new Business and Management programmes and our new BA Primary Education with Qualified Teacher Status with an initial intake of over 80 students. A further 20 new programmes, including Law LLB, BA Architecture, and BEng/MEng Robotics Engineering will have their first cohorts in 2020/21.



RESEARCH AND INNOVATION THAT MAKE A DIFFERENCE

Cardiff Metropolitan University undertakes research at the cutting edge of new knowledge creation and application. Our research has direct application in business, industry, professions and the community and our innovation activities are aligned with an academic portfolio oriented towards practice-focused and professionally recognised education, research and innovation.

The University's research and innovation activities deliver impact in art and design, business and management, education and social policy, sport and health sciences and digital, data and design technologies. Key strengths of the University's interdisciplinary and international research include those advancing human performance and product design.

Staff are engaged in a diverse range of innovation underpinned by research activity including Knowledge Transfer Partnerships (KTPs), consultancy, collaboration, contract research and training. Renowned organisations such as Logitech Allergan, GE Healthcare, Kenwood, Principality Building Society, European Central Bank, Ford, Aneurin Bevan University Health Board, Cardiff and Vale Health Board have all featured in our portfolio of applied research and knowledge exchange partners.

With a growing international reputation, the University is committed to developing its leading research groups, supporting new and emerging areas of research and realising ambitious plans in relation to REF 2021.

The results of REF 2014 revealed that 80% of the University's submission was 'internationally excellent' (3*) or 'world leading' (4*), leading to Times Higher Education placing Cardiff Met as the highest-ranking 'post-92 university' (and 41st overall). The institutional ranking based on 'impact' placed Cardiff Met 50th overall and the secondhighest 'post-92 UK university'.

The Strategic Plan sets out a proposal for the creation of 'Global Academies' to develop taught postgraduate and research provision that is international, interdisciplinary and impactful. Global Academies build on areas of research strength across the University encouraging interdisciplinarity and respond to new and emerging global challenges. Up to five Global Academies are planned over the life of the Strategic Plan with three already established in Health and Human Performance, Human Centred Design and Food Science, Safety and Security.

Key Research Areas:

- **Cardiff School of Art & Design**

Architecture and architectural design technology | Art history, theory and philosophy | Art-science collaboration | Ceramics | Creative digital technology | Design history, theory and philosophy | Ecological building practices | Embodied interaction | Fine art | Engineering building services | Environmental energy | Sensory design | Sustainable built environment | User-centred design.

- **Cardiff School of Education & Social Policy**

Adult and continuing education | Contemporary media | Creative writing | Drama | Education policy | Educational technology | English | Higher education | Language in education | Music education | Outdoor learning | Primary education and early years | Science education.

- **Cardiff School of Management**

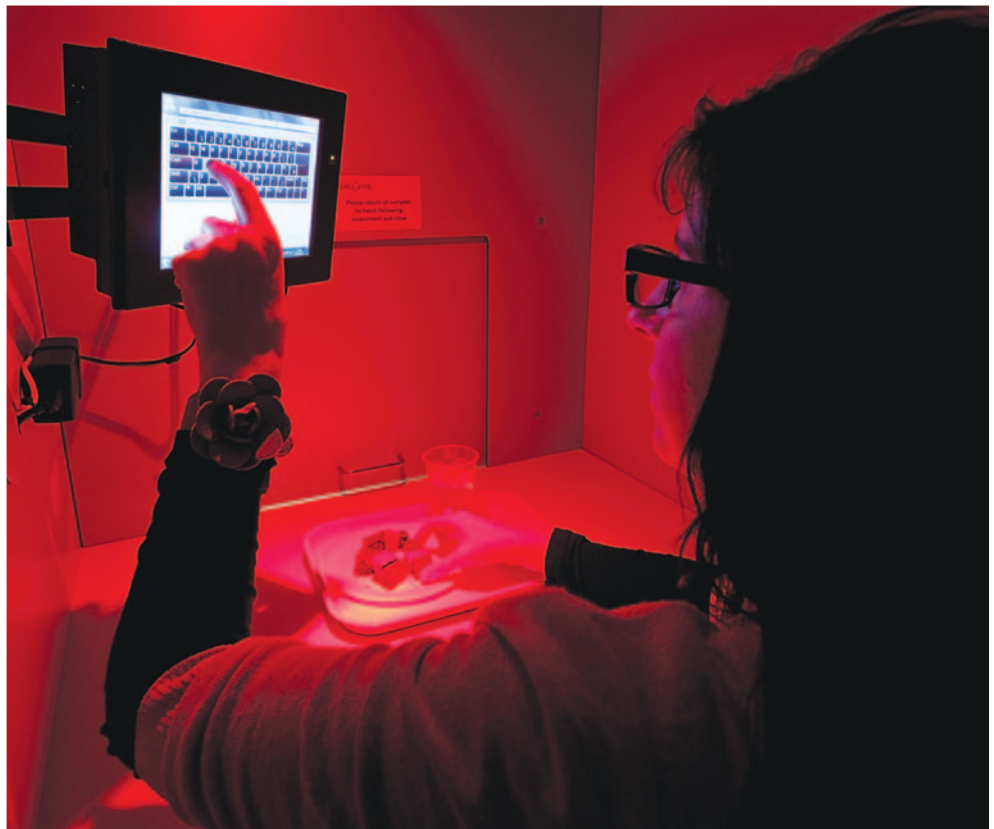
Creative leadership and enterprise | Events management | Lean thinking | Public sector management | Renewable energy and systems | Sustainability | Tourism | Value flow | Wine industry.

- **Cardiff School of Sport & Health Sciences**

Cardiovascular health and ageing | Food, nutrition and health | Health and risk management | Performance analysis | Physiology | Sociology and philosophy of sport | Sport, exercise and health psychology | Sport biomechanics | Sport coaching and pedagogy | Sport development and management | Sports injury and rehabilitation.

- **Cardiff School of Technologies**

AI & robotics | Applied engineering and management | Computing and informatics | Data Science | Industry 4.0 and software engineering | Machine learning | Multimedia and games, AR and VR | Networking: sensors, wireless, security | Visualisation and graphics.



CARDIFF

The capital city of Wales has changed beyond recognition over the past two decades with very significant development in its environment and infrastructure supporting a growing population, increasing business development and investment in world-leading sporting and cultural facilities.

The former docks have been regenerated to form the superb Cardiff Bay waterfront which, in addition to providing outdoor recreation opportunities, is home to the Wales Millennium Centre and the BBC Orchestra and Welsh National Opera alongside the devolved Senedd (Welsh Parliament) and Roald Dahl Plass. Cardiff is, today, an exciting European destination and a very 'liveable' capital city.

Cardiff is the closest European capital city to London, soon to be accessible in under 100 minutes by train. The city is projected to be the UK's fastest growing city over the next 20 years; it is a young and talented city, primed for economic growth and where the role of higher education has never been more important.

Cardiff is also home to the National Museum of Wales, the Museum of Welsh Life at nearby St Fagan's and stunning civic buildings surrounded by many acres of parkland which form the 'green lungs' of the city stretching all the way from Cardiff Bay to the University's Llandaff Campus four miles to the north. Despite the recent rapid growth, Cardiff remains a famously friendly city. It is a vibrant city full of character and atmosphere and with a range of first-class facilities for sport, nightlife, shopping and sightseeing along with a year-round calendar of cultural and sporting events.

Barcelona may be a famous city by the sea, but it is Cardiff that boasts Europe's largest waterfront development, Cardiff Bay. The harbour area has always been important to the city and in the late 19th century Cardiff was the world's busiest coal port. In 1999, the Cardiff Bay barrage created a huge freshwater lake which is now surrounded by waterfront bars, restaurants and cafes. The Roald Dahl Plass, named after the famous Cardiff-born author, is a stunning public plaza next to the Senedd, the modern Welsh Parliament Building, and the Wales Millennium Centre where our graduation ceremonies are held each July.

The bowl-shaped area of Roald Dahl Plass, with its amphitheatre-style seating, acts as a venue for open-air concerts and festivals throughout the summer. Lazy Sundays can easily be spent in Cardiff Bay which is also accessible by boat from both the city centre and the nearby seaside town of Penarth.

Cardiff is without doubt a sporting capital. The Principality Stadium dominates the skyline and has seen sporting history played out under its retractable roof since 1999. A legendary destination for rugby fans on an international match day, Cardiff is often awash with people from across the world. Many say there isn't anywhere better to watch a major sporting event than in this world class stadium, unusually situated at the very heart of a city centre. In addition to rugby, the Principality Stadium is also home to the British Speedway Grand Prix and has hosted international boxing clashes.

Cardiff City FC also has its stadium at Leckwith, Cricket enthusiasts will enjoy an afternoon at Sophia Gardens, home to Glamorgan County Cricket Club and very near the Llandaff Campus, while ice hockey fans can see the Cardiff Devils team in action at the city's ice-rink.

Cardiff Met itself has some of the best sporting facilities in Wales, but beyond the University there is plenty of opportunity for recreational sport. The River Taff runs right through the city centre and the beautiful surroundings of Roath Park Lake, near the Cyncoed Campus are worth a visit. The Welsh Institute of Sport at Sophia Gardens, a short walk from the Llandaff Campus, has world class facilities, including badminton, tennis and netball courts. Cardiff's surroundings are beautiful, with easy access to coast and countryside, including Gower and the Brecon Beacons National Park, with ample opportunities for outdoor recreation and sport including mountain biking, sailing, cycling and walking.

Cardiff itself has excellent transport links. Situated just off the M4 motorway, the city is served by Central Station in the heart of the city and is only two hours from London by train. Cardiff Airport is located just to the west of the City and offers easy access to many domestic and international destinations by air.



Quick facts about Cardiff:

- Research by *MoneySuperMarket.com* put **Cardiff in the top three UK cities for quality of life for the last three years running.**
- **Cardiff was ranked 'third best' capital city in Europe in *The Quality of Life in European Cities Survey*.**
- *The Student Living Index 2016* **ranked Cardiff 3rd cheapest city in the UK for rental costs.**



Cardiff
Metropolitan
University

Prifysgol
Metropolitan
Caerdydd